



Buckfast Close, Popley, Basingstoke, RG24 9HD

£285,000 - Freehold





Barons Estate Agents are pleased to bring to the market this No Onward chain family home. The accommodation to the first floor comprises of 3 bedrooms and 4 piece bathroom. The ground floor benefits from an entrance lobby, store cupboard, cloakroom, kitchen/dining room and lounge. To the front of the property there is a dwarf hedge and gate with a grassed area and shrub beds. The rear garden enjoys rear access, a patio, lawned area with flower and shrub beds. There is NO ONWARD CHAIN.

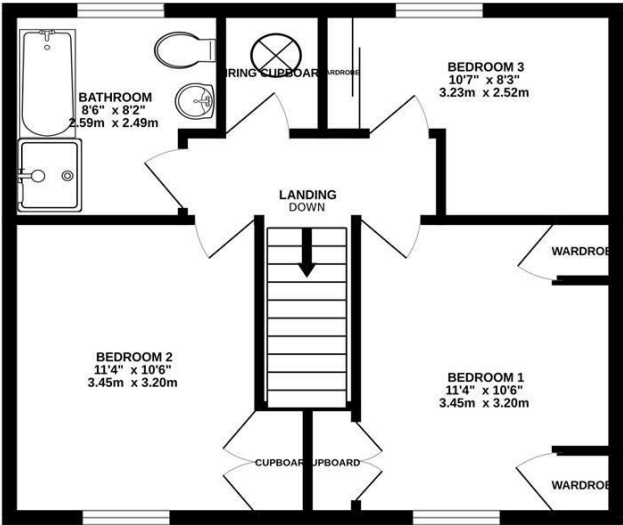
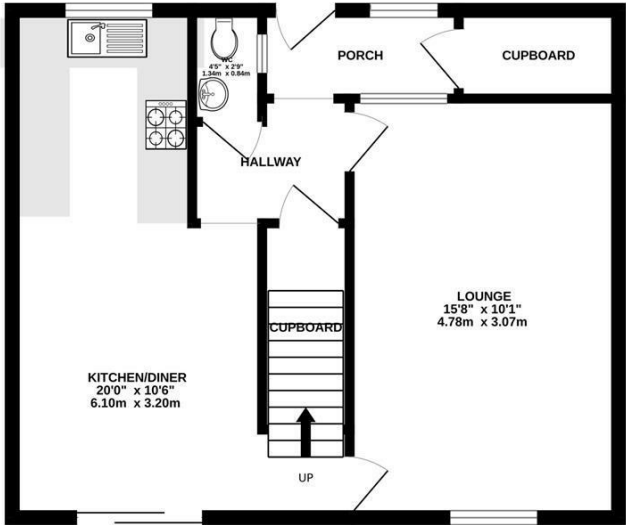
### Key Points and Features

- 3 Bedrooms
- 4 Piece Bathroom
- Entrance Lobby
- Cloakroom
- Kitchen
- Dining Room
- Lounge
- Garden
- No Onward Chain.



GROUND FLOOR

1ST FLOOR



Measurements are approximate. Not to scale. Illustrative purposes only.  
Made with Metropix ©2024

Energy Efficiency Rating		
	Current	Potential
Very energy efficient - lower running costs		
(92 plus) A		
(81-91) B		
(69-80) C		
(55-68) D		
(39-54) E		
(21-38) F		
(1-20) G		
Not energy efficient - higher running costs		
England & Wales		
		EU Directive 2002/91/EC

### Location

Buckfast Close is situated to the North East of the town centre and offers good access to local schools and convenience shops. More extensive shopping is a short drive away at Chineham Shopping Centre and Festival Place. The A33 and M3 are easily accessible along with mainline railway to London Waterloo. For the outdoor person there are country walks, golf courses, National Trust Properties, eateries and pubs around.

### Tenure

Freehold

### Local Authority

Basingstoke & Deane Borough Council

### Council Tax

Band C

### Viewing Arrangements

Viewings of this property are strictly via Barons Estate Agents.

### Extra Services

Barons Estate Agents will recommend the services of other businesses and may receive a referral fee in some instances where a buyer or seller uses the services of that company.